



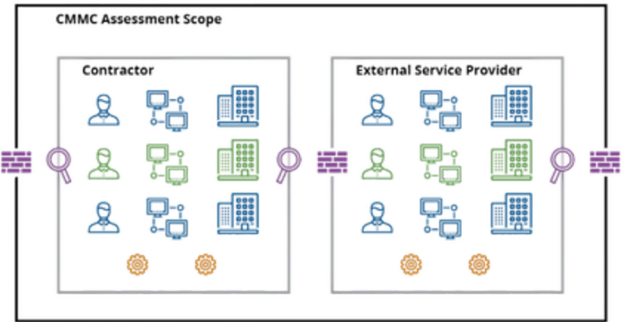
CMMC SCOPING QUICK GUIDE

WHAT IS CMMC SCOPING?

Scoping defines the logical, physical, and functional boundaries of your environment where CUI is stored, processed, & transmitted.

It determines what will be assessed & what won't.

SCOPE EXAMPLE



- CUI Assets
- Security Protection Assets
- Contractor Risk Managed Assets
- Specialized Assets
- Out-of-Scope Assets

source: Scoping Guide Version 2.0

If scoping is unclear, your entire environment may fall into scope, driving unnecessary cost and complexity



Follow the CUI

- Where does it live?
- How does it move?
- What touches it?



What's in scope?

CUI Assets

Store, process, transmit CUI

Security Protection Assets

Protect the CUI environment



What is out of scope?

- No interaction with CUI
- Properly segmented

If it doesn't touch CUI, it shouldn't be in scope

What might be in scope?

Contractor Risk Managed Assets
Indirect interaction with CUI

Specialized Assets

Require case-by-case decisions



Pro Tip: Isolate to Reduce



Smaller boundary = Less cost + less complexity + easier assessment

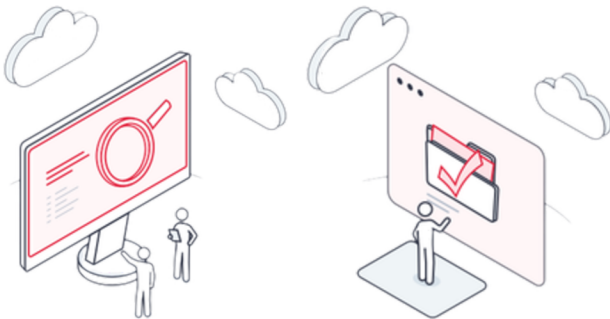
Common Scoping Mistakes

- Scoping the entire enterprise
- Skipping data flow mapping
- Not identifying all CUI touchpoints
- Poor segmentation
- Designing before defining

THE GOAL

YOUR ENVIRONMENT SHOULD BE:

- ✓ DEFINED — Clear boundaries
- ✓ CONTROLLED — Only what's needed
- ✓ DEFENSIBLE — Assessment-ready



Scoping is where **PE & SC Domains** come in

Physical Protection (PE)

The Physical Protections (PE) domain requires the restriction of physical access to any devices or environments handling, storing, or processing FCI and CUI. The Practices in this domain require controlling, managing, and monitoring physical access to FCI and CUI environments by authorized and unauthorized personnel.

→ *Where CUI exists in your environment*

Systems and Communications Protection (SC)

The Systems and Communications Protections (SC) domain ensures your organization appropriately protects communication paths and systems processing FCI and CUI. This domain includes requirements for protecting sensitive data while at rest, in transit, and during processing.

→ *How CUI moves across your systems*

Bottom Line: Well defined Scope = Better Outcomes

Better scope = better outcomes

If you can't clearly explain your scope, you can't defend it in an assessment.



SCAN TO
CONTACT
US



(888) 907-3335



info@redspin.com